



2009 ENVIRONMENTAL IMPACT REPORT

AMBIENT AIR QUALITY

Environment Management Permit 3095

At:

**HOWE SOUND PULP & PAPER LIMITED
Port Mellon, B. C.**

By:

**Al Strang, P. Eng.,
Manager, Technical and Environment**

January 2010

2009 ENVIRONMENTAL IMPACT REPORT - AMBIENT AIR QUALITY

SUMMARY

Overall ambient air quality at Langdale continued to be good in 2009. The number of hours that TRS exceeded the guideline for "good" air quality returned to a more typical number after the high of 2008.

DISCUSSION

Ambient air quality at Langdale for 2009 is compared to previous years in Table 1 and Figures 1-4.

There was no significant change in any of the average values compared to previous years.

The maximum values for each parameter were each within the long term range.

HSPP received five inquiries and complaints regarding odour during the year. This is a reduction from the previous two years, which each had eight.

Table 1. Langdale Ambient Air Quality Comparison

| | "Good Air Quality" | 2007 | 2008 | 2009 |
|---------------------------------|--------------------|------|------|------|
| Annual Average TRS | | 0.7 | 1.2 | 0.7 |
| Maximum 1-hour TRS | 7 | 19.7 | 14.3 | 18.8 |
| Hours TRS > "Good Air Quality" | | 9 | 32 | 14 |
| Annual Average PM ₁₀ | 25 | 9.1 | 9.7 | 9.7 |
| Maximum 1-hour PM ₁₀ | | 23.0 | 25.1 | 48.5 |
| Annual Average SO ₂ | 25 | 2.3 | 3.5 | 2.7 |
| Maximum 1-hour SO ₂ | 450 | 39.1 | 23.7 | 30.6 |
| Annual Average NO ₂ | 60 | 10.8 | 9.7 | 9.4 |
| Maximum 1-hour NO ₂ | 200 | 87.0 | 57.4 | 60.0 |

All concentrations in ug/m³

CONCLUSION

Ambient air quality at Langdale remains good.

Figure 1. Langdale TRS

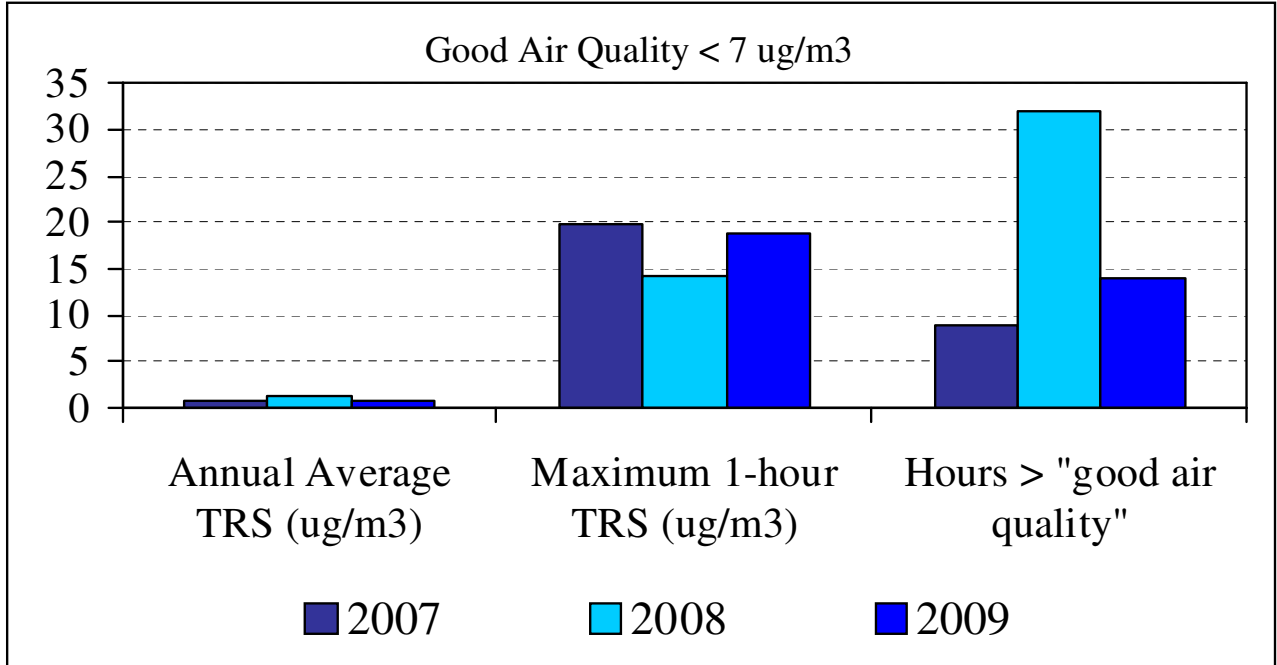


Figure 2. Langdale PM₁₀ (ug/m³)

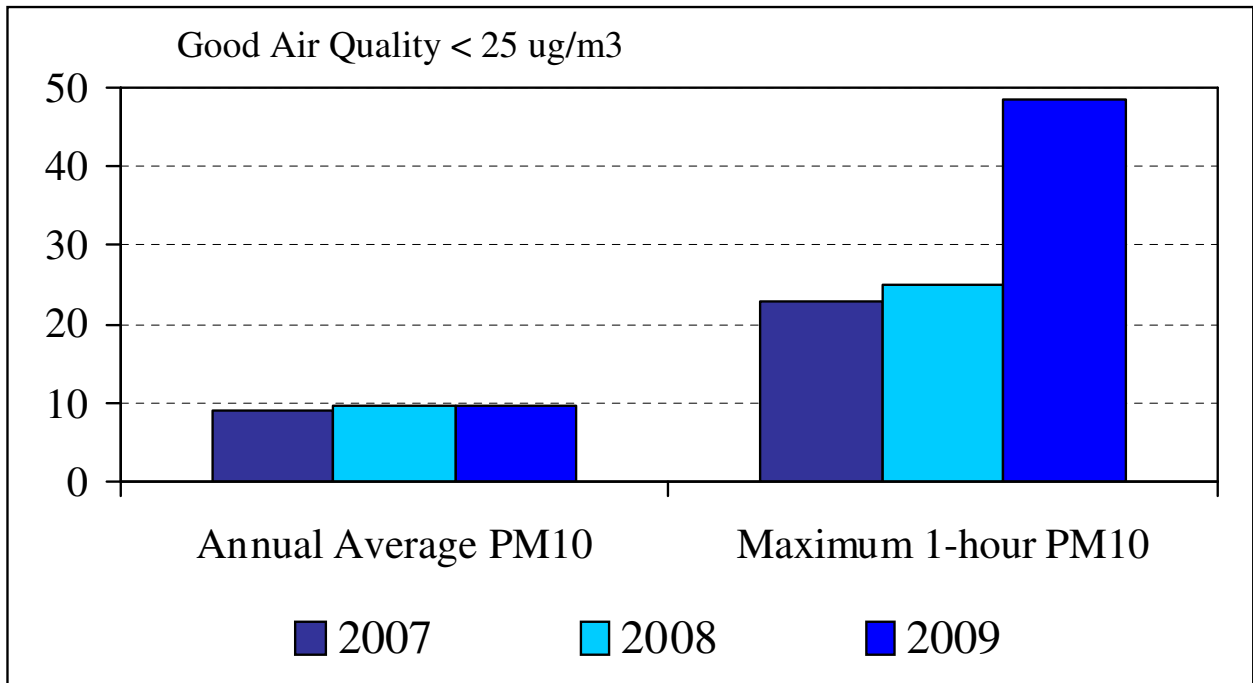


Figure 3. Langdale SO₂ (ug/m³)

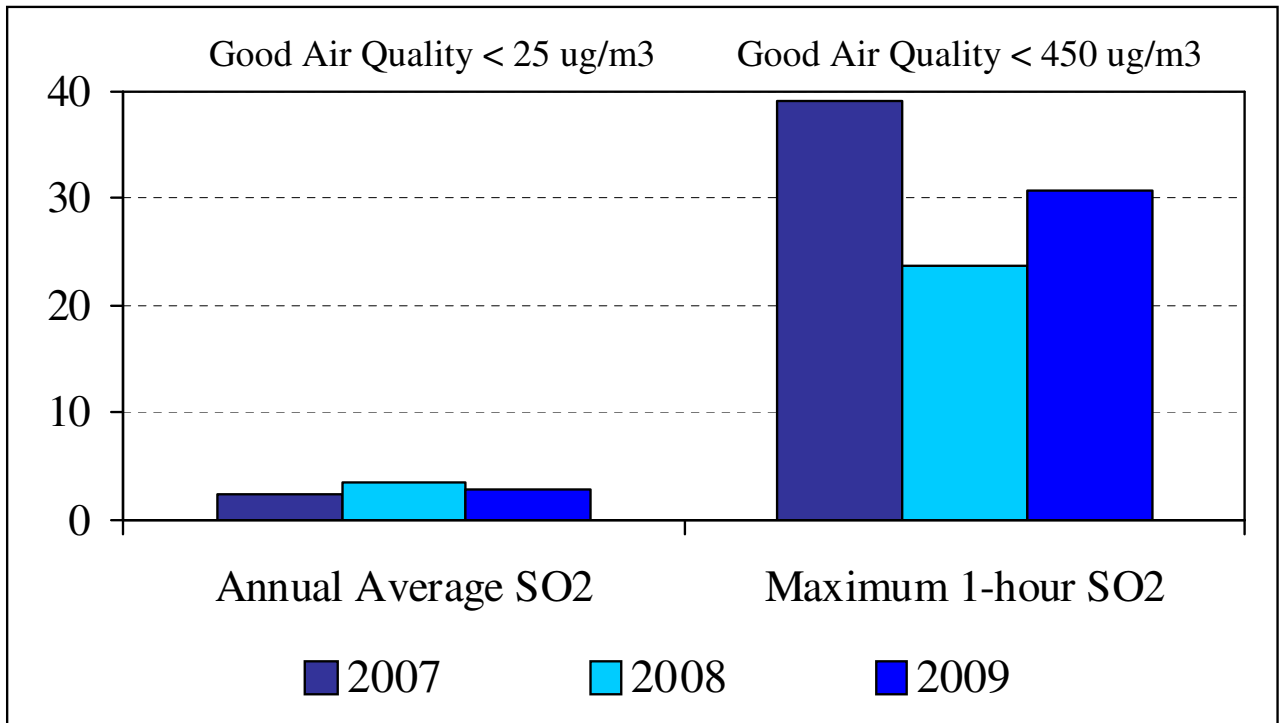


Figure 4. Langdale NO₂ (ug/m³)

