



2010 WOOD RESIDUE CONSUMPTION REPORT

Environment Management Permit 3095

**HOWE SOUND PULP & PAPER CORPORATION
Port Mellon, B. C.**

By:

**Al Strang, P. Eng.,
Manager, Technical and Environment**

January 2011

2010 WOOD RESIDUE CONSUMPTION REPORT

Howe Sound Pulp and Paper burned 1,093,718 m³ of wood residue in 2010.

The quantity of fuel received from the Sunshine Coast continued to decrease from historical levels. Lack of availability, caused by the decrease in logging and sawmilling on the coast of BC continues to be the reason for this reduction. About 44% of the wood residue burned by HSPP was pine beetle killed wood from the southern interior. The portion of wood fuel sourced from construction and demolition material was 14.8%.

Table 1: Annual Wood Residue Consumption (thousands of cubic meters)

	2008	2009	2010
Total Consumption	1,039	1,077	1,094
Sunshine Coast Supply	492	283	193
% of total	47.3	26.2	17.6
Off Coast Supply	547	794	901
% of total	52.7	73.8	82.4

Total consumption of wood residue in the first half of 2011 is expected to be similar to recent years. The consumption is expected to increase following the conversion of HSPP's boiler to a bubbling fluidized bed, which is planned for June 2011. No significant change is anticipated in the volume sourced from the Sunshine Coast.

Fig. 1: Wood Residue Consumption (thousand cubic metres)

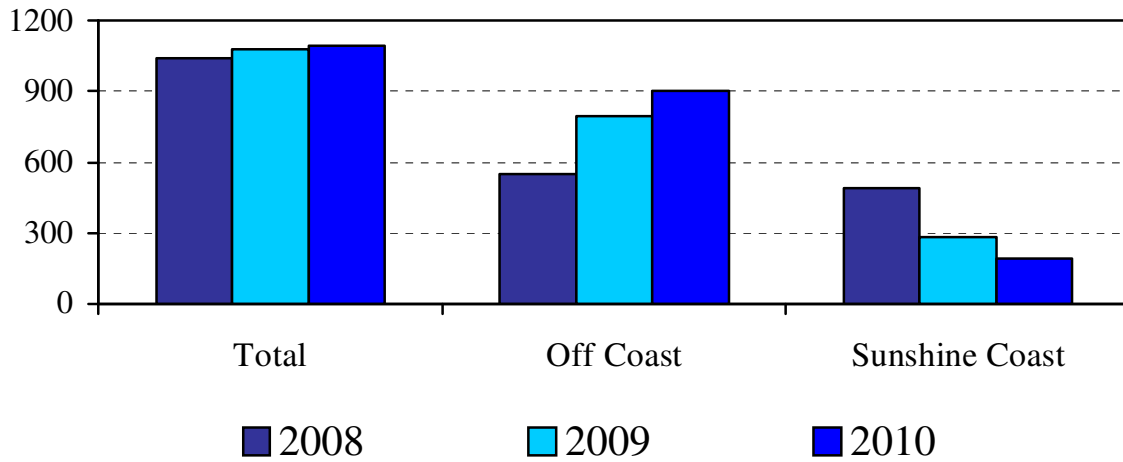


Fig. 2: Sunshine Coast Wood Residue (% of total)

